

## Flexible Sigmoidoscopy

Flexible sigmoidoscopy (SIG-moy-DAH-skuh-pee) enables the physician to look at the inside of the large intestine from the rectum through the last part of the colon, called the sigmoid or descending colon. Physicians may use the procedure to find the cause of diarrhea, abdominal pain, or constipation. They also use it to look for early signs of cancer in the descending colon and rectum. With flexible sigmoidoscopy, the physician can see bleeding, inflammation, abnormal growths, and ulcers in the descending colon and rectum. Flexible sigmoidoscopy is not sufficient to detect polyps or cancer in the ascending or transverse colon (two-thirds of the colon).

For the procedure, you will lie on your left side on the examining table. The physician will insert a short, flexible, lighted tube into your rectum and slowly guide it into your colon. The tube is called a sigmoidoscope (sig-MOY-duh-skope). The scope transmits an image of the inside of the rectum and colon, so the physician can carefully examine the lining of these organs. The scope also blows air into these organs, which inflates them and helps the physician see better.

If anything unusual is in your rectum or colon, like a polyp or inflamed tissue, the physician can remove a piece of it using instruments inserted into the scope. The physician will send that piece of tissue (biopsy) to the lab for testing.

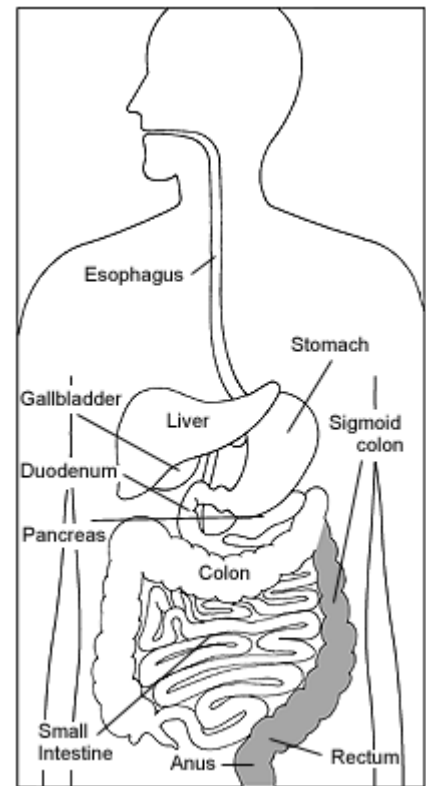
Bleeding and puncture of the colon are possible complications of sigmoidoscopy. However, such complications are uncommon.

Flexible sigmoidoscopy takes less than 20 minutes. During the procedure, you might feel pressure and slight cramping in your lower abdomen. You will feel better afterward when the air leaves your colon.

### Preparation

The lower colon and rectum must be completely empty for flexible sigmoidoscopy to be thorough and safe. Your doctor will tell you what cleansing routine to use. In general, preparation consists of one or two enemas prior to the procedure but could include laxatives or dietary modifications as well. However, in some instances your doctor might advise you to forgo any special preparation. It is important that you follow your doctor's instructions carefully.

Flexible sigmoidoscopy is generally well tolerated; however, if your doctor feels you should receive a sedative medication you will be given very specific instructions in order for the procedure to be performed safely.



The digestive system

## For More Information

### **International Foundation for Functional Gastrointestinal Disorders (IFFGD)**

P.O. Box 170864

Milwaukee, WI 53217–8076

Phone: 1–888–964–2001 or 414–964–1799

Fax: 414–964–7176

Email: [iffgd@iffgd.org](mailto:iffgd@iffgd.org)

Internet: [www.iffgd.org](http://www.iffgd.org)

---

### **National Digestive Diseases Information Clearinghouse**

2 Information Way

Bethesda, MD 20892–3570

Phone: 1–800–891–5389

Fax: 703–738–4929

Email: [nddic@info.niddk.nih.gov](mailto:nddic@info.niddk.nih.gov)

Internet: [www.digestive.niddk.nih.gov](http://www.digestive.niddk.nih.gov)

The National Digestive Diseases Information Clearinghouse (NDDIC) is a service of the National Institute of Diabetes and Digestive and Kidney Diseases (NIDDK). The NIDDK is part of the National Institutes of Health of the U.S. Department of Health and Human Services. Established in 1980, the Clearinghouse provides information about digestive diseases to people with digestive disorders and to their families, health care professionals, and the public. The NDDIC answers inquiries, develops and distributes publications, and works closely with professional and patient organizations and Government agencies to coordinate resources about digestive diseases.

Publications produced by the Clearinghouse are carefully reviewed by both NIDDK scientists and outside experts.

This publication is not copyrighted. The Clearinghouse encourages users of this publication to duplicate and distribute as many copies as desired.

---

Source: NIH Publication No. 05–4332

November 2004